

# WYPTA FALL CONFERENCE 2011

## Vestibular Rehabilitation (Maximum 30 people)

### Before Sept 4th

Members: \$300 \_\_\_\_\_  
Non members: \$350 \_\_\_\_\_  
Student ½ price \_\_\_\_\_

### After Sept 4th

Members: \$350 \_\_\_\_\_  
Non members: \$400 \_\_\_\_\_  
Student ½ price \_\_\_\_\_

## Movement System Syndromes of the Lumbar Spine and Hip: Interactions and Evidence (Maximum 75 people)

### Before Sept 4th

Members: \$350 \_\_\_\_\_  
Non members: \$400 \_\_\_\_\_  
Student ½ price \_\_\_\_\_

### After Sept 4<sup>th</sup>

Members: \$400 \_\_\_\_\_  
Non members: \$450 \_\_\_\_\_  
Student ½ price \_\_\_\_\_

Name \_\_\_\_\_

APTA # \_\_\_\_\_

E-mail \_\_\_\_\_

(need current e-mail for confirmation)

Address \_\_\_\_\_

Method of Payment

Check \_\_\_\_\_

Visa \_\_\_\_\_

Master Card \_\_\_\_\_

Credit card # \_\_\_\_\_

Expiration Date \_\_\_\_\_

Signature \_\_\_\_\_

Course registration may be submitted  
by one of the following:

Fax: 307-266-2891

Mail: WYPTA  
1347 South Wisconsin  
Casper WY 82609

---

**\*\*Please include your current e-mail  
so we can send your course  
confirmation e-mail\*\***

---

**Early bird Registration Deadline is  
September 4, 2011**

Regular Deadline is Sep. 25, 2011

For more information, please contact  
Kathy Day at: 307-235-3910

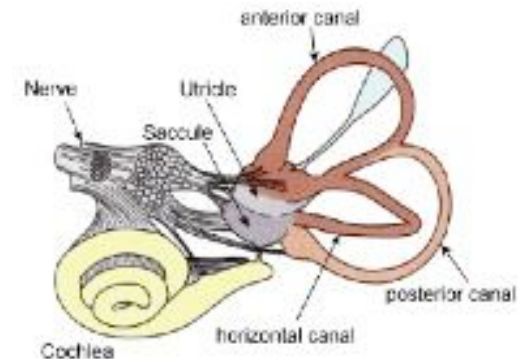
**Host Hotel:**  
**Ramada Plaza Riverside**  
Block of rooms under WYPTA

Rate: \$75.00/ night (1-4 people)  
Rate includes a complimentary breakfast

**(307)235-2531**  
**300 West F Street**  
**Casper, WY 82601**

# WYPTA FALL CONFERENCE

October 8<sup>th</sup> and  
9<sup>th</sup>, 2011  
Casper, Wyoming



## **Vestibular Rehabilitation**

**October 8<sup>th</sup> & 9<sup>th</sup>, 2011**

**Julie Knoll, PT NCS**

### **Course Description**

The Classification System that will be presented has been developed over a period of 15 years working with dizzy patients in a multidisciplinary setting including professionals in PT, Otology, Neurology, and Optometry. While teaching the common principles of evaluation and treatment of the patient with dizziness and imbalance from vestibular disorders, this course goes a step further in assisting the clinician in adequately classifying patients to determine which type of symptom group will respond best to particular interventions. This improves the outcome and reduces the duration of treatment by making the most effective treatment decisions, once the specific evaluation is made. This is an intermediate course that will cover dizziness of all types, imbalance, gaze instability, and positional vertigo. Specific intervention and exercise progression will be covered in the areas of habituation, balance training, gaze stability, and particle repositioning.

## **Movement System Syndromes of the Lumbar Spine and Hip: Interactions and Evidence**

**October 8<sup>th</sup> & 9<sup>th</sup>, 2011**

**Shirley Sahrman, PhD, PT, FAPTA**

### **Course Description**

Two aspects of the interactions of the lumbar spine and hip are particularly important to physical therapy. The first relates to determining whether pain in the hip region is from the lumbar spine, the hip or both. The second aspect is that though kinesiology, a key basic science of physical therapy, stresses the interaction of the kinetic chain this information is not commonly used in practice for examination and for treatment. An intrinsic factor believed to contribute to mechanical pain is the development of a joint whose movement pattern is characterized by moving more readily in a specific direction than movement in the same direction by adjoining joints. Contributing to the development and maintenance of this movement pattern is the relative flexibility or stiffness of the adjoining segments. Thus the interaction of the hip and lumbar spine becomes particularly important. This lecture will describe the movement system syndromes (MSS) of the lumbar spine and the hip joint. The factors contributing to these syndromes particularly as they relate to the passive and active characteristics of muscle and the recent focus on structural variations of the hip joints will be described. The clinical and laboratory evidence of back and hip interactions will be discussed. The presentation will help clarify how the pain pattern and the examination that includes correcting the offending movement can assist the therapist in determining the regional source of the pain.

## **WYPTA Course Schedule:**

**Saturday: October 8, 2011**

Registration:  
7:30am – 7:45am

### **Courses**

8:00 - 12:00  
12:00 - 1:00pm (Lunch break)  
(Auction items available to bid on over lunch)  
1:00 - 5:00pm

### **WYPTA Chapter Business Meeting**

5:30pm  
(Appetizers served)  
Auction will be completed at the end of the meeting.

**Sunday October 9, 2011**

### **Courses:**

8:00 - 12:00  
12:00 - 1:00pm (Lunch break)  
1:00 - 5:00pm

Please check the WYPTA website  
for conference updates  
[www.wypta.org](http://www.wypta.org)